

**LANIER**

# LP235N



B/W LASER PRINTER

*A smart investment in business innovation*

*Powerful 11" x 17" printing capabilities  
in an easy-to-use, secure solution.*



# Get 11" x 17" capabilities in a desktop solution

Invest in a printer that can meet your every printing need. The LANIER® LP235N delivers the speed, versatile paper supply and convenience to handle any job from envelopes to spreadsheets. Simple, yet sophisticated, the Lanier LP235N combines long-lasting All-In-One print cartridge technology with professional solution support including remote device monitoring utilities, plus an array of advanced data security features like network authentication and user access codes. A robust design and standard networking provide reliable 11" x 17" printing capabilities to every connected user. Best of all, you'll get laser-sharp 1200 x 1200 dpi output with a low cost of ownership for a solution that maximizes productivity, your image and your bottom line. The Lanier LP235N. It's a savvy investment.

## ***A Media-Rich Solution for Busy Workgroups***

The Lanier LP235N offers a versatile, expandable paper supply for the production of engineering drawings, spreadsheets, envelopes and more.

- Add one or two optional 500-Sheet Paper Feed Units to the standard 500-Sheet Paper Tray and 100-Sheet Bypass Tray to support any combination of media types and sizes to meet every printing need.
- Eliminate outsourcing and speed job turnaround. Reliably print onto thick media up to 57 lb. Bond/120 lb. Index as well as transparencies, labels, card stocks and recycled papers to keep every job in-house.
- Print professional looking envelopes effortlessly. Load up to 10 envelopes via the Bypass Tray, or print quantities up to 50 at a time using the optional Envelope Feeder that installs inside the optional Paper Feed Unit.



*The cost-effective Lanier LP235N offers high resolution 11" x 17" B/W laser printing.*

## High Performance B/W Laser Printing

The Lanier LP235N delivers the speed, image quality and flexibility to support demanding workloads and a variety of applications.

- Keep the print queue moving with a powerful 466MHz processor and 256 MB RAM. Standard Ethernet connectivity allows every connected user to easily program print jobs with PCL or PostScript emulation using intuitive drivers.
- Meet every deadline without sacrificing image quality. A brief 19-second warm-up time and a fast 6.8-second first print time complement the printer's efficient 35-ppm output speed at resolutions up to 1200 x 1200 dpi.
- Tackle the toughest workloads with a high duty cycle and minimal maintenance requirements. The 500-Sheet Output Tray collects a full ream of paper to keep the page pipeline flowing.

## Affordable 11" x 17" Printing Made Easy

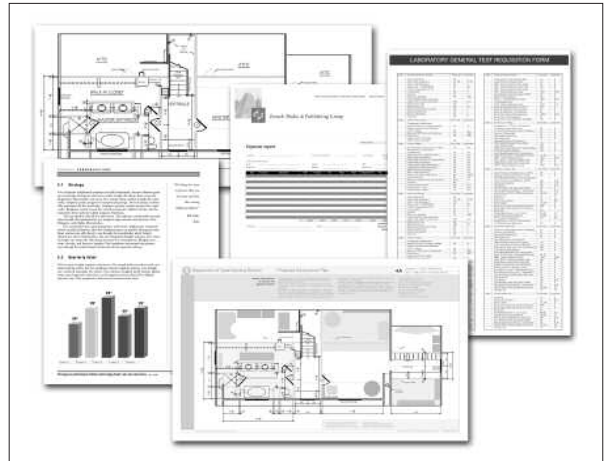
The Lanier LP235N provides maximum return on investment with low total cost of ownership, compact design and ease of use.

- Enjoy both affordable hardware pricing and a competitive cost per page. This solution is the best value in its class of 11" x 17" black & white laser printers.
- Maximize uptime and streamline supply and support issues with high yield, 20,000-page All-In-One (AIO) print cartridge technology. Replace the front-loading AIO cartridge in seconds and eliminate the need for service calls.
- Increase paper capacity without increasing footprint. The total front access design conserves valuable desk space for placement wherever you need efficient monochrome laser printing up to 11" x 17".

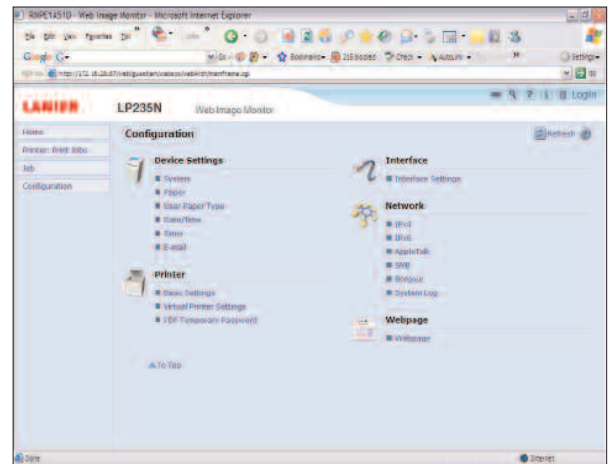
## Secure Data Storage & Protection for Maximum Peace of Mind

The Lanier LP235N offers a number of security tools to control device access and protect confidential information.

- Activate the User Code feature to restrict device access, set volume limits and track printer usage for up to 200 employees.
- Leverage the power of your corporate data network to authenticate users against passwords stored in other enterprise directories for maximum security needs.
- Enable the Locked Print function to ensure files can only be output after the user inputs a 4 – 8 digit release code at the control panel for guaranteed confidentiality.
- Automate meter reading and fleet reporting tasks for multiple units installed across the building or across the country using Lanier's @Remote Intelligent Management System.



Use one printer to handle all jobs. Quickly adjust each paper source to hold media ranging from postcard all the way up to 11" x 17" size. Even print from the Bypass Tray without inputting a paper size.



Easily see device and job status, and correct error conditions at the printer through the user-friendly control panel and informative four-line LCD. Or manage printer and network settings, and check supply levels remotely using Lanier's intuitive Web Image Monitor utility.

## The Total Green Office Solution



Lanier continues its long-standing commitment to developing office solutions with environmentally friendly and superior energy- and supply-saving features, without compromising productivity.

**LANIER****LP235N****MAIN UNIT SPECIFICATIONS**

<b>Configuration Technology</b>	Desktop Laser beam scanning, electro-photographic printing with dual-component toner development
<b>Resolution</b>	300 x 300 dpi, 600 x 600 dpi, 1200 x 1200 dpi
<b>Print Speed (LTR)</b>	35 pages-per-minute
<b>First Print Speed</b>	6.8 seconds or less
<b>Warm-Up Time</b>	19 seconds or less
<b>Maximum Paper Size</b>	11" x 17"
<b>Standard Paper Supply</b>	500-Sheet Tray + 100-Sheet Bypass Tray
<b>Optional Paper Supply</b>	500-Sheet Paper Feed Unit (1 or 2 may be installed)
<b>Maximum Paper Capacity</b>	1,600 sheets
<b>Output Capacity</b>	500 sheets
<b>Paper Sizes</b>	Standard Tray: 11" x 17", A3, B4, A4, B5 (JIS), A5, A6, Legal, Letter, HLT, Executive, Foolscap, Folio, 8K, 16K Custom Size: Minimum: 3.54" x 5.83"; Maximum: 11.70" x 17.01" Bypass Tray: 11" x 17", A3, B4, A4, B5 (JIS), A5, A6, Legal, Letter, HLT, Executive, Foolscap, Folio, 8K, 16K Custom Size: Minimum: 2.52" x 5.83"; Maximum: 12.01" x 17.01" Opt. Paper Feed Unit: 11" x 17", A3, B4, A4, B5 (JIS), A5, Legal, Letter, Executive, Foolscap, Folio, 8K, 16K Custom Size: Minimum: 7.17" x 5.83"; Maximum: 11.70" x 17.01"
<b>Paper Weights</b>	Standard Tray: 16 - 57 lb. Bond/120 lb. Index (60 - 216 g/m <sup>2</sup> ) Bypass Tray: 14 - 57 lb. Bond/120 lb. Index (52 - 216 g/m <sup>2</sup> ) Opt. Paper Feed Unit: 16 - 57 lb. Bond/120 lb. Index (60 - 216 g/m <sup>2</sup> )
<b>Paper Types</b>	Standard Tray: Plain Paper, Recycle Paper, Envelopes, Thick Paper, Labels & Thin Paper Bypass Tray: Plain Paper, Recycle Paper, Envelopes, Thick Paper, Labels & Thin Paper Opt. Paper Feed Unit: Plain Paper, Recycle Paper, Thick Paper, Labels & Thin Paper

<b>Automatic Duplexing</b>	Optional, Up to 11" x 17"/A3 17 - 28 lb. Bond (64 - 105 g/m <sup>2</sup> )
<b>Dimensions (WxDxH)</b>	18.82" x 17.2" x 15.9" (478 x 437 x 404 mm)
<b>Weight</b>	49.6 lb. (22.5 kg)*
*Includes standard paper tray and AIO, and power cable.	
<b>Power Requirements</b>	120V, 60Hz
<b>Power Consumption</b>	880W Maximum Energy Saver Mode: 3.9W
<b>Safety Regulations</b>	UL60950-1, FCC Part 15 Class B ENERGY STAR v. 1.1

**PRINT CONTROLLER SPECIFICATIONS**

<b>CPU</b>	466MHz
<b>Memory</b>	256 MB RAM standard, 512 MB RAM maximum Optional 80 GB Hard Disk Drive
<b>Standard Interfaces</b>	USB 2.0, USB Host, Ethernet 10/100Base-TX
<b>Optional Interfaces</b>	IEEE 802.11a/g Wireless LAN, Gigabit Ethernet, IEEE 1284 Parallel
<b>Fonts</b>	PCL: 45 fonts + 13 International fonts PS3: 80 fonts
<b>Printer Languages/ Drivers</b>	PCL 5e, PCL 6, PostScript 3 emulation, PDF Direct Print & XPS (XPS driver available via download at <a href="http://www.lanier.com">www.lanier.com</a> )
<b>Network Protocols</b>	TCP/IP, AppleTalk, IPX/SPX* *Optional
<b>Supported Environments</b>	Windows 2000, XP, Vista, 7 Server 2003/2008/2008 R2 Mac OS 8.6 - 9.x, OS X v.10.1 - 10.6 (Windows 7, Server 2008 R2 and Mac OS 10.6 available via download at <a href="http://www.lanier.com">www.lanier.com</a> ) Novell NetWare, Citrix Presentation Server, UNIX (Lanier Filter Phase 11), SAP R/3
<b>Software Utilities</b>	Web Image Monitor DeskTopBinder - SmartDeviceMonitor for Client Printer Utility for Mac Font Manager 2000 @Remote Embedded Software Architecture (ESA)

**CONTROLLER OPTIONS**

128 MB RAM DIMM (Type G)  
256 MB RAM DIMM (Type G)  
80 GB Hard Disk Drive (Type 2670)  
IEEE 802.11a/g Wireless LAN (Type L)  
Gigabit Ethernet (Type A)  
VM Card (Type K)\*  
HDD Overwrite Security (Type L)  
IEEE 1284 (Type A)  
SD Card for Netware Printing (Type C)  
(Two SD card slots are available)  
Data Storage Card (Type A)  
HDD Encryption Unit (Type D)  
IPDS\*\* (Type 6330)

\*Additional memory option of at least 256 MB is required for the use of the SDK application.

\*\*At least 128 MB of additional RAM is required for IPDS functionality. For more advanced functionality, it is recommended the HDD option and/or additional 256 MB RAM is installed. The IPDS option will be available in April 2010. Please check with your local sales organization for the specific release date.

**HARDWARE ACCESSORIES**

Paper Feed Unit (PB 3090)  
Duplex Unit (Type AD610)  
Envelope Feeder (Type 610)\*

\*Must be installed in an optional Paper Feed Unit.

**CONSUMABLES & YIELDS**

<b>Black All-In-One Cartridge</b>	20,000 pages*
<b>Maintenance Unit</b>	90,000 pages

\*Declared yield values based on ISO/IEC 19752.

Actual yields may vary based on types of images printed and other factors.

The Lanier LP235N ships with an All-In-One print cartridge yielding 6,000 pages.

All other consumables ship at full yield.

For maximum performance and yield, we recommend using genuine Lanier parts and supplies.

**WARRANTY**

The Lanier LP 235N is under warranty against defects for a period of one year from the date of purchase. Consumables are under warranty for a period of 90 days from the date of purchase or until depleted, whichever comes first. Please refer to warranty documents shipped with the product for more details.

[www.lanier.com](http://www.lanier.com)

**Bringing Lanier Value to Your Organization**

Lanier technology offers a diverse portfolio of solutions to help your organization stay competitive and move ahead. Let Lanier show you how to empower your business to improve critical processes, keep information secure, ensure compliance and promote environmental sustainability while reducing the total cost of ownership.

Lanier Five Dedrick Place, West Caldwell, NJ 07006  
©2009 Lanier is a registered trademark of Ricoh Americas Corporation. All rights reserved. All other trademarks are the property of their respective owners. Print speed may be affected by network, application or PC performance. Specifications and external appearances are subject to change without notice. Products are shown with optional features.



L3159